



MICRO CONTROL SWITCHES

MV - SERIES

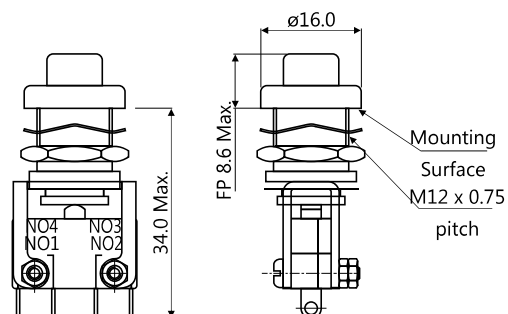
- Characteristics
- 2 circuit double break snap action mechanism.
 - 1 NO + 1 NC contacts with form Z arrangement.
 - Spring controlled pivoted mechanism.
 - Rapid changeover of contacts ensures reliable bi-stability.
 - Long mechanical & electrical life.
 - Silver alloy or silver alloy gold plated contacts.
 - Push buttons are available in Red, Green, Yellow, Blue, Black & White colours. State colour while ordering.
 - Conform to IEC 1058-1 standard.



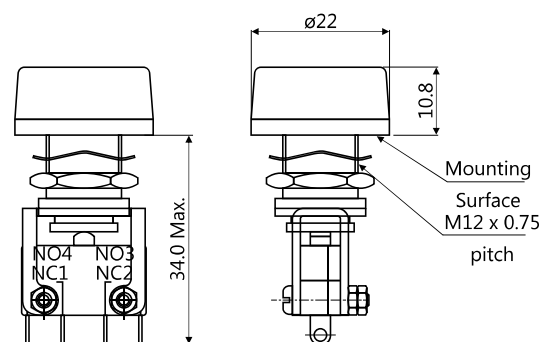
Approval



Ordering code	MV16()P1/*
Actuating force	220 gms. (max.)
Release force	50 gms. (min.)
Pretravel	1.3 mm. (max.)
Overtravel	0.15 mm.
Movement differential	0.75 mm. (max.)
Min. centre distance between two adjacent units	19 mm.
Cut-out size	Ø12.5 mm.



Ordering code	MV16()P2/*
Actuating force	220 gms. (max.)
Release force	50 gms. (min.)
Pretravel	1.3 mm. (max.)
Overtravel	0.15 mm.
Movement differential	0.75 mm. (max.)
Min. centre distance between two adjacent units	25.4 mm.
Cut-out size	Ø12.5 mm.

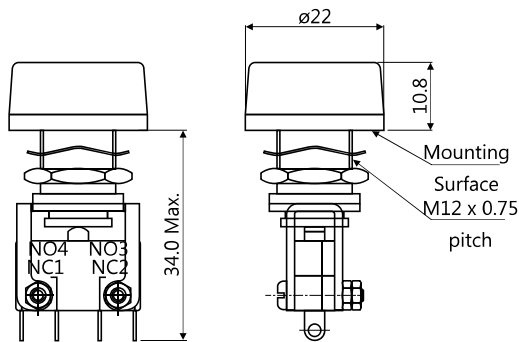




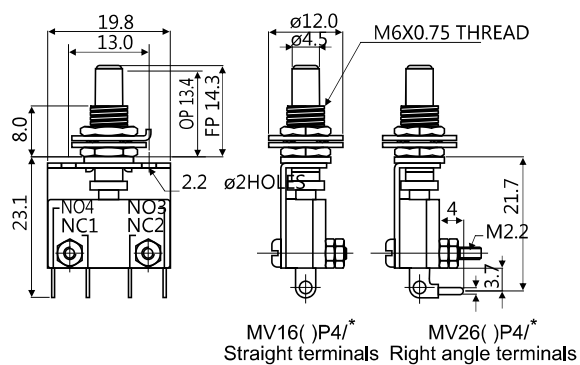
MICRO CONTROL SWITCHES

MV - SERIES

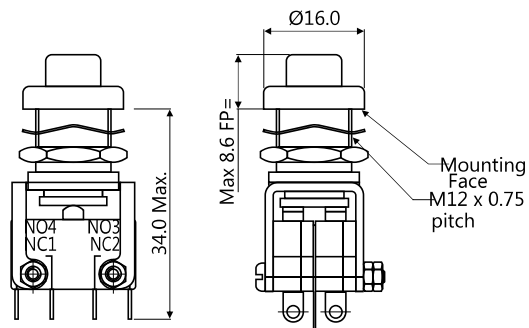
Ordering code	MV16()P3/*
Actuating force	220 gms. (max.)
Release force	50 gms. (min.)
Pretravel	1.3 mm. (max.)
Overtravel	0.15 mm.
Movement differential	0.75 mm. (max.)
Min. Centre distance between two adjacent units	25.4 mm.
Cut-out size	Ø12.5 mm.



Ordering code	MV16()P4/* MV26()P4/*
Actuating force	220 gms. (max.)
Release force	50 gms. (min.)
Pretravel	1.3 mm. (max.)
Overtravel	0.15 mm.
Movement differential	0.75 mm. (max.)
Min. Centre distance between two adjacent units	19 mm.
Cut-out size	Ø6.2 mm.



Ordering code	2MV16()P1/*
Actuating force	440 gms. (max.)
Pretravel	1.3 mm. (max.)
Overtravel	0.15 mm.
Movement differential	0.5 mm
Cut-out size	Ø12.5 mm.
Contact	2 NO + 2 NC



All dimensions are in mm.
Due to continuous improvement in products, we reserve the right to alter specifications without prior notice

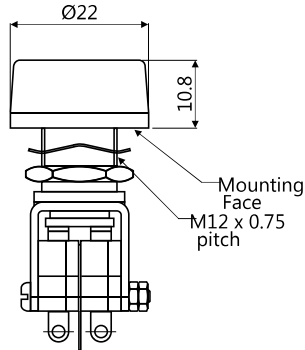
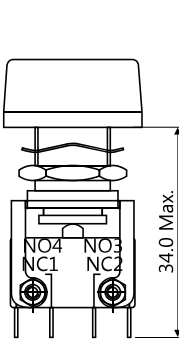
www.essendeinki.com



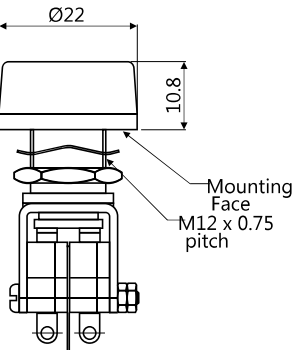
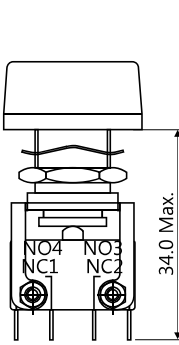
MICRO CONTROL SWITCHES

MV - SERIES

Ordering code	2MV16()P2/*
Actuating force	440 gms. (max.)
Pretravel	1.3 mm. (max.)
Overtravel	0.15 mm.
Movement differential	0.5 mm
Cut-out size	Ø12.5 mm.
Contact	2 NO + 2 NC



Ordering code	2MV16()P3/*
Actuating force	440 gms. (max.)
Pretravel	1.3 mm. (max.)
Overtravel	0.15 mm.
Movement differential	0.5 mm
Cut-out size	Ø12.5 mm.
Contact	2 NO + 2 NC



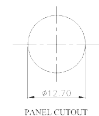
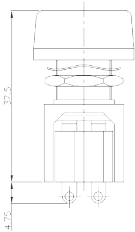
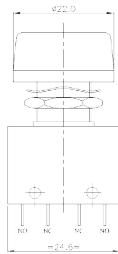
Note :

1. Micro control switch MV - series can also be supplied with chrome plated metal shroud for P2 & P3 push button arrangements.
Add suffix 'M' in ordering code. egMV-16() P2/* (for plastic shroud)
MV-16() P2M/* (for metal shroud)

These momentary action Micro push button switches are available with plastic bracket in INO-INC contact and 2 NO-2NC contact configurations.

Ordering code

	MV16()PP3/*	2MV16()PP3/*
Actuating force	220 gms. (max.)	440 gms. (max.)
Pretravel	1.3 mm. (max.)	1.3 mm. (max.)
Overtravel	0.15 mm.	0.15 mm.
Movement differential	0.75 mm. (max.)	0.5 mm
Cut-out size	Ø12.5 mm.	Ø12.5 mm.
Contact	1NO + 1NC	2 NO + 2 NC



Note :

1. In plastic bracket push button are also available in P1 & P2 arrangements.
1. Add following suffix at * in the ordering code of micro switch for knob colour.
Red = R Blue = BL
Green = G Black = B
Yellow = Y White = W

All dimensions are in mm.
Due to continuous improvement in products, we reserve the right to alter specifications without prior notice



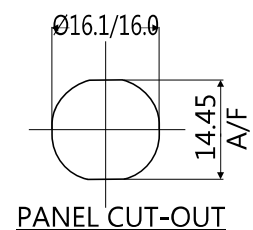
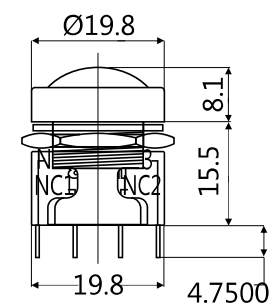
MICRO CONTROL SWITCHES

MV - SERIES

MV16 micro control switch is a momentary action micro control switch for 16 mm. panel cut-out. The simple push button assembly consists of an aesthetic push button head and the MV16 micro switch rated for switching at 10A at 250V AC. This snap-fit micro switch is sealed for IP 67 protection making it suitable for use in industrial and commercial environments. Micro control switches are available in 6 attractive colours and can be customised as per user requests.



- Characteristics**
- 2 circuit double break snap action mechanism.
 - 1 NO + 1 NC contacts with form Z arrangement
 - Spring controlled pivoted mechanism
 - Rapid changeover of contacts ensures reliable bi-stability
 - Straight solder terminals
 - Long mechanical and electrical life
 - Silver alloy or Silver alloy Gold plated contacts
 - Conforms to IEC 1058-1 standard
 - IP67 protection (front), IP40 (rear micro switch)
 - UL94-VO fire retardant thermoplastic body.

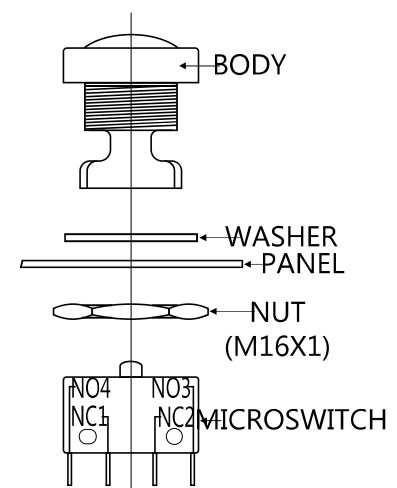


PANEL CUT-OUT

Ordering code	MV 16() P5/*
Actuating force	390 gms. (max.)
Pretravel	1.3 mm. (max.)
Overtravel	0.15 mm.
Travel (nom)	2.3 mm.
Electrical life	50,000 cycle
Mechanical life	100,000 cycle
Movement differential	0.5 mm. (max.)
Min. Centre distance between two adjacent units	24 mm.
Cut-out size	Ø16.0 mm.
Protection	IP 67 (front), IP 40 (rear)
Maximum current	10A (resistive @ 70° C)
Di-electric strength (min.)	1 KV (AC) for 1 minute
Insulation resistance (min.)	1000mo @ 500V (DC)
Contact resistance (max.)	25 milliohm

Assembly instructions

1. Assemble body through washer and front of panel.
2. Assemble nut to body.
3. "Snap" micro switch into body assembly from behind panel.



Note :

1. Place 'S' for silver plated and 'G' for gold plated contacts in bracket '()' against ordering code of micro switch.
2. Add following suffix at * in the ordering code of micro control switch for knob colour.

Red = R	Blue = BL
Green = G	Black = B
Yellow = Y	White = W

All dimensions are in mm.
Due to continuous improvement in products, we reserve the right to alter specifications without prior notice

www.essendeinki.com