



PUSH BUTTON SWITCHES (22.5 mm.)

PB2 - SERIES

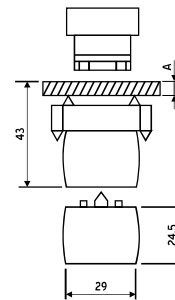
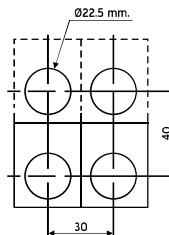
- Characteristics
- Aesthetically elegant
 - Self wiping contacts ensure trouble free operation
 - Safe in operation, locking device unaffected by vibration
 - Protection against electrical shock (unit earthed)

- Shrouded terminals
- Modular construction
- Conform to IEC/EN-60947-5-1

CE

TECHNICAL DATA

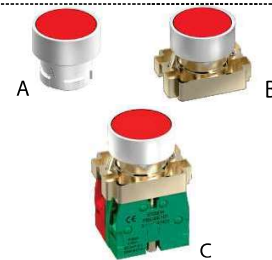
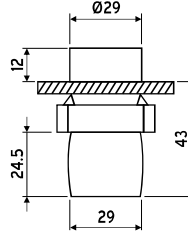
Standard conformity	IS : 13947 (Part 5/SEC-1) & IEC : 947-5(1)
Thermal current	10 Amps.
Ambient temperature	-29° C to +70° C
Rated Insulation voltage	Ui = 600V
Rated operating characteristics (As per IEC-60947-5-1)	AC 15 = 3A, 250V AC DC 13 = 0.27A, 250V DC
Electrical durability	1 million operations at 3600 cycles per hour
	AC - 15 V 24 120 230 A 4 3 2
	DC - 13 V 24 110 A 0.5 0.2
Mechanical durability	3 million operations
Electrical life	Depends on load current
Degree of protection	IP-65 (all operating heads)
Dielectric test voltage	2.5KV AC for 1 minute
Terminal marking	max. 2x1.5mm ² or 1x2.5mm ² minimum 1x0.5mm ²
Altitude	<3000 meters
Terminal marking	1-2 for normally closed 3-4 for normally open
Contact operation	Self wiping, slow break NO or NC
Short circuit protection	10A cartridge, fuse HRC type rated for resistive loading
Cut-out required	22.5 mm. dia.



A = thickness of mounting panel
1 to 6 mm.

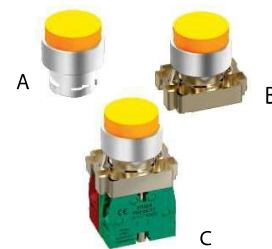
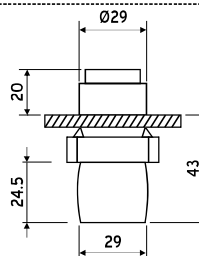
SPRING RETURN PUSH BUTTON SWITCHES FLUSH TYPE

Type	Description	Ordering code
A	Actuator	PB2-BA ()
B	Actuator & metal bracket	PCB2-BA ()
C	Actuator, metal bracket & contact block	PCB2-BA ()*



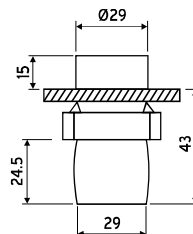
PROJECTING TYPE

Type	Description	Ordering code
A	Actuator	PB2-BL ()
B	Actuator & metal bracket	PCB2-BL ()
C	Actuator, metal bracket & contact block	PCB2-BL ()*



BOOTED TYPE

Type	Description	Ordering code
A	Actuator	PB2-BP ()
B	Actuator & metal bracket	PCB2-BP ()
C	Actuator, metal bracket & contact block	PCB2-BP ()*



Add following suffixes in the ordering code of push button switches for colour and contact blocks.

() 1 = White, 2 = Black, 3 = Green, 4 = Red, 5 = Yellow, 6 = Blue

* 1 = NO contact, 2 = NC contact, 3 = NO+NO, 4 = NC+NC, 5 = NO+NC A = 2NO+NC B = NO+2NC C = 2NO+2NC

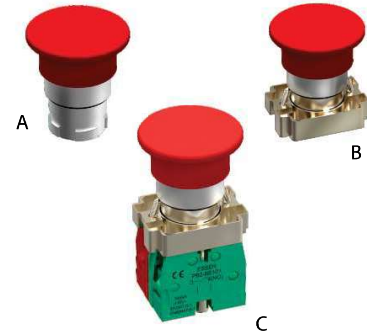
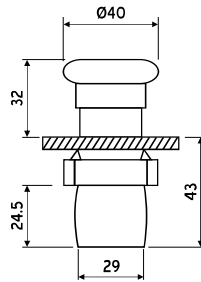


PUSH BUTTON SWITCHES (22.5 mm.)

PB2 - SERIES

MUSHROOM HEAD (Ø 40 mm.)

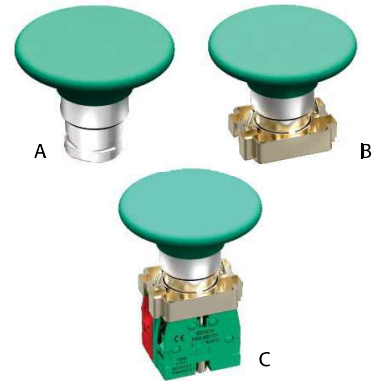
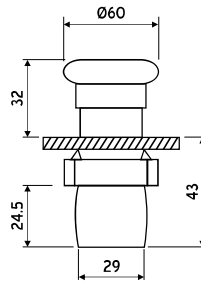
Type	Description	Ordering code
A	Actuator	PB2-BC()
B	Actuator & metal bracket	PCB2-BC()
C	Actuator, metal bracket & contact block	PCB2-BC()*



Note : Mushroom head (Ø 40 mm.) push button switches are available in Red, Green & Black colours only.

MUSHROOM HEAD (Ø 60 mm.)

Type	Description	Ordering code
A	Actuator	PB2-BR()
B	Actuator & metal bracket	PCB2-BR()
C	Actuator, metal bracket & contact block	PCB2-BR()*

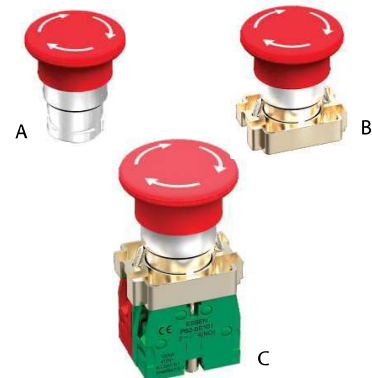
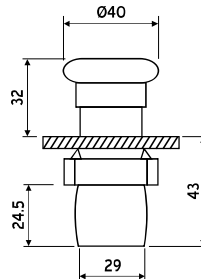


Note : Mushroom head (Ø 60 mm.) push button switches are available in Red, Green & Black colours only.

LATCHING MUSHROOM HEAD (Ø 40 mm.) (Emergency stop push button)

PRESS TO LOCK, TURN TO RELEASE

Type	Description	Ordering code
A	Actuator	PB2-BS 5()
B	Actuator & metal bracket	PCB2-BS 5()
C	Actuator, metal bracket & contact block	PCB2-BS 5()*



Note : Emergency stop Mushroom push button switches are available in Red & Black colours only.
Add suffix 'E' in the ordering code of Emergency stop push button switch for marking 'E STOP' on actuator.

Add following suffixes in the ordering code of push button switches for colour and contact blocks.

() 1 = White, 2 = Black, 3 = Green, 4 = Red, 5 = Yellow, 6 = Blue

* 1 = NO contact, 2 = NC contact, 3 = NO+NO, 4 = NC+NC, 5 = NO+NC A = 2NO+NC B = NO+2NC C = 2NO+2NC



PUSH BUTTON SWITCHES (22.5 mm.)

PB2 - SERIES

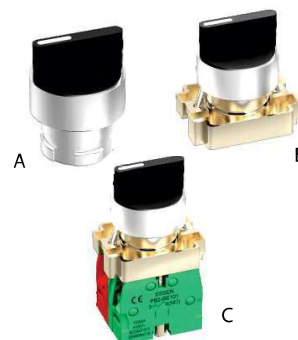
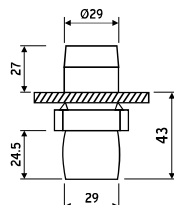
SELECTOR SWITCHES

(Non illuminated)

TWO POSITION

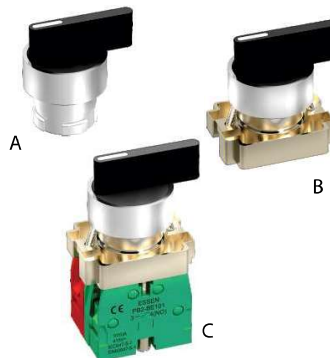
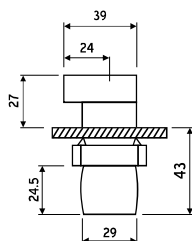
STAY PUT (standard knob)

Type	Description	Ordering code
A	Actuator	PB2-BD 2
B	Actuator & metal bracket	PCB2-BD 2
C	Actuator, metal bracket & contact block	PCB2-BD 2*



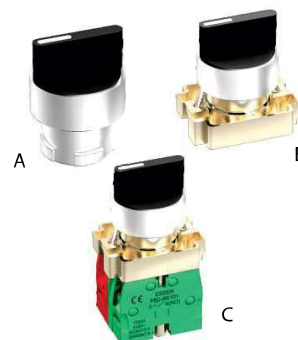
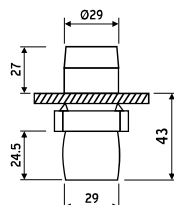
STAY PUT (long knob)

Type	Description	Ordering code
A	Actuator	PB2-BJ 2
B	Actuator & metal bracket	PCB2-BJ 2
C	Actuator, metal bracket & contact block	PCB2-BJ 2*



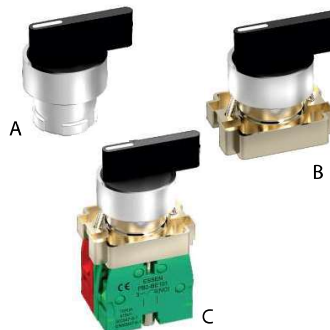
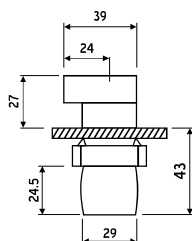
SPRING RETURN FROM RIGHT TO LEFT (standard knob)

Type	Description	Ordering code
A	Actuator	PB2-BD R2
B	Actuator & metal bracket	PCB2-BD R2
C	Actuator, metal bracket & contact block	PCB2-BD R2*



SPRING RETURN FROM RIGHT TO LEFT (long knob)

Type	Description	Ordering code
A	Actuator	PB2-BJ R2
B	Actuator & metal bracket	PCB2-BJ R2
C	Actuator, metal bracket & contact block	PCB2-BJ R2*



Add following suffix at * in the ordering code of push button switches for contact blocks.

1 = NO contact, 2 = NC contact, 3 = NO+NO, 4 = NC+NC, 5 = NO+NC A = 2NO+NC B = NO+2NC C = 2NO+2NC



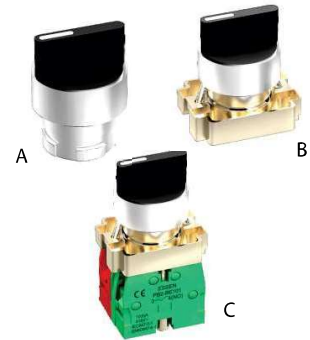
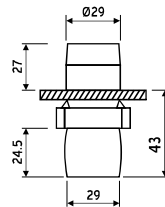
PUSH BUTTON SWITCHES (22.5 mm.)

PB2 - SERIES

THREE POSITION

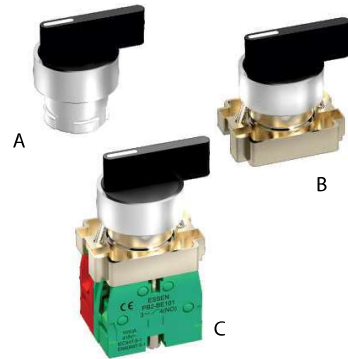
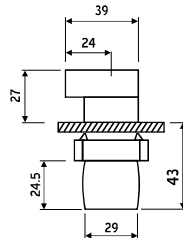
STAY PUT CENTRE OFF (standard knob)

Type	Description	Ordering code
A	Actuator	PB2-BD 3
B	Actuator & metal bracket	PCB2-BD 3
C	Actuator, metal bracket & contact block	PCB2-BD 3*



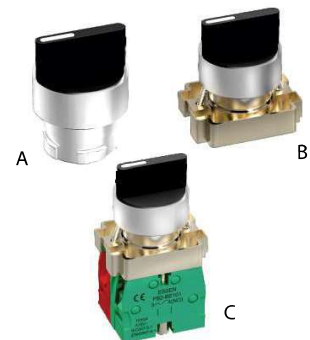
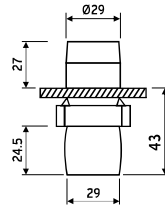
STAY PUT CENTER OFF (long knob)

Type	Description	Ordering code
A	Actuator	PB2-BJ 3
B	Actuator & metal bracket	PCB2-BJ 3
C	Actuator, metal bracket & contact block	PCB2-BJ 3*



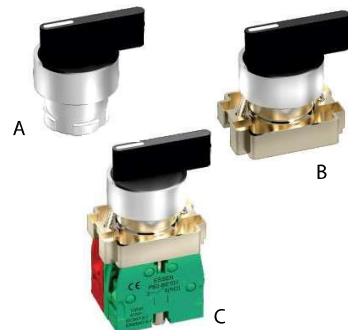
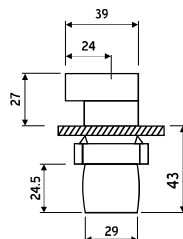
SPRING RETURN FROM BOTH POSITION TO CENTRE (standard knob)

Type	Description	Ordering code
A	Actuator	PB2-BD R3
B	Actuator & metal bracket	PCB2-BD R3
C	Actuator, metal bracket & contact block	PCB2-BD R3*



SPRING RETURN FROM BOTH POSITION TO CENTRE (long knob)

Type	Description	Ordering code
A	Actuator	PB2-BJ R3
B	Actuator & metal bracket	PCB2-BJ R3
C	Actuator, metal bracket & contact block	PCB2-BJ R3*



Add following suffix at * in the ordering code of push Button switches for contact blocks.

1 = NO contact, 2 = NC contact, 3 = NO+NO, 4 = NC+NC, 5 = NO+NC A = 2NO+NC B = NO+2NC C = 2NO+2NC



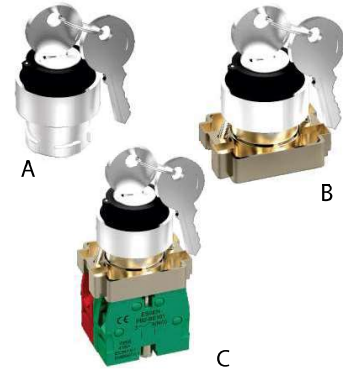
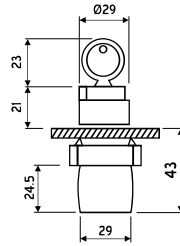
PUSH BUTTON SWITCHES (22.5 mm.)

PB2 - SERIES

KEY SWITCHES (2 position)

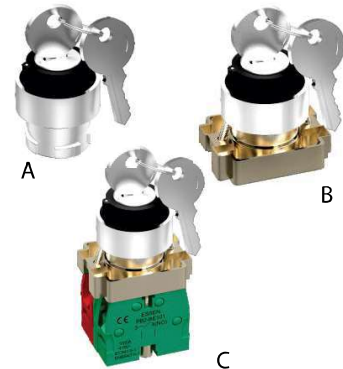
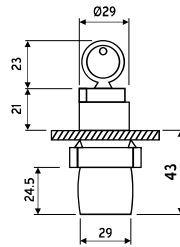
KEY REMOVABLE IN "LEFT HAND" POSITION (stay put)

Type	Description	Ordering code
A	Actuator	PB2-BG 2
B	Actuator & metal bracket	PCB2-BG 2
C	Actuator, metal bracket & contact block	PCB2-BG 2*



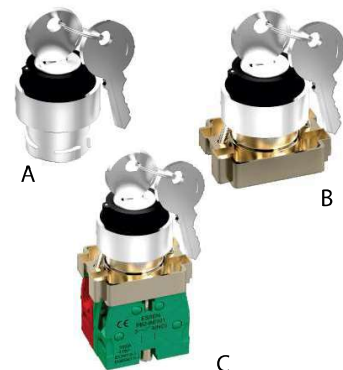
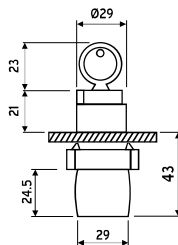
KEY REMOVABLE IN "BOTH" POSITIONS (stay put)

Type	Description	Ordering code
A	Actuator	PB2-BG 4
B	Actuator & metal bracket	PCB2-BG 4
C	Actuator, metal bracket & contact block	PCB2-BG 4*



KEY REMOVABLE IN "LEFT HAND" POSITION (spring return from right to left)

Type	Description	Ordering code
A	Actuator	PB2-BG 6
B	Actuator & metal bracket	PCB2-BG 6
C	Actuator, metal bracket & contact block	PCB2-BG 6*



Add following suffix at * in the ordering code of push button switches for contact blocks.
 1 = NO contact, 2 = NC contact, 3 = NO+NO, 4 = NC+NC, 5 = NO+NC A = 2NO+NC B = NO+2NC C = 2NO+2NC



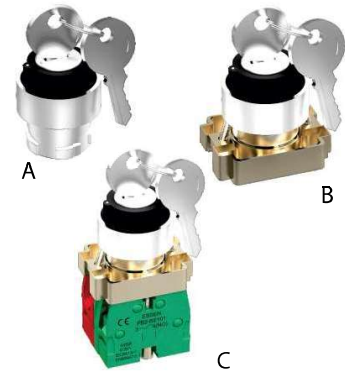
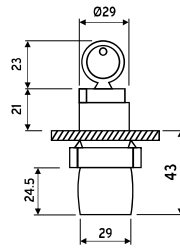
PUSH BUTTON SWITCHES (22.5 mm.)

PB2 - SERIES

KEY SWITCHES (3 position)

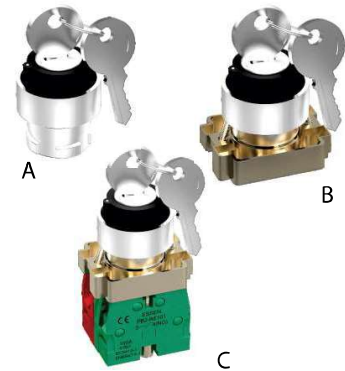
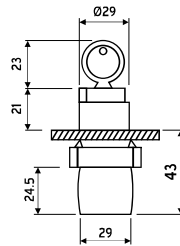
KEY REMOVABLE IN CENTRE OFF POSITION (Stay put)

Type	Description	Ordering code
A	Actuator	PB2-BG 3
B	Actuator & metal bracket	PCB2-BG 3
C	Actuator, metal bracket & contact block	PCB2-BG 3*



KEY REMOVABLE IN CENTRE OFF POSITION (Spring return)

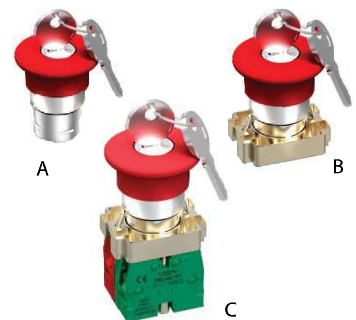
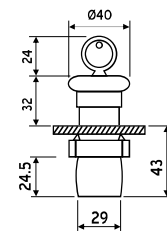
Type	Description	Ordering code
A	Actuator	PB2-BG 7
B	Actuator & metal bracket	PCB2-BG 7
C	Actuator, metal bracket & contact block	PCB2-BG 7*



LATCHING MUSHROOM HEAD (40 mm.) (Emergency stop)

PRESS TO LOCK TURN TO RELEASE

Type	Description	Ordering code
A	Actuator	PB2-BSI()
B	Actuator & metal bracket	PCB2-BSI()
C	Actuator, metal bracket & contact block	PCB2-BSI()*



Note : Emergency stop mushroom key switches are available in Red & Black colours only.

Add following suffix at * in the ordering code of push button switches for contact blocks.

1 = NO contact, 2 = NC contact, 3 = NO+NO, 4 = NC+NC, 5 = NO+NC A = 2NO+NC B = NO+2NC C = 2NO+2NC



PUSH BUTTON SWITCHES (22.5 mm.)

PB2 - SERIES

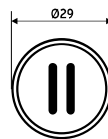
SIGN PUSH BUTTON SWITCHES

Spring return, flush type (with metal bracket)

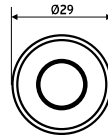
Description	Ordering code
Green colour with 'I' mark	PCB2-BA 331*



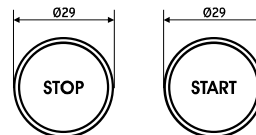
Description	Ordering code
Green colour with 'II' mark	PCB2-BA 336*



Description	Ordering code
Red colour with 'O' mark	PCB2-BA 432*

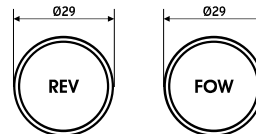


Description	Ordering code
Red colour with 'STOP' mark	PCB2-BA 434*



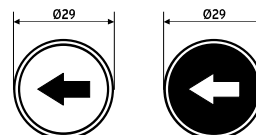
Green colour with 'START' mark	PCB2-BA 333*
--------------------------------	---------------------

Description	Ordering code
Green colour with 'REV' mark	PCB2-BA 337*



Green colour with 'FOW' mark	PCB2-BA 338*
------------------------------	---------------------

Description	Ordering code
White colour with black arrow	PCB2-BA 334*



Black colour with white arrow	PCB2-BA 335*
-------------------------------	---------------------

Add following suffix at * in the ordering code of push button switches for contact blocks.

1 = NO contact, 2 = NC contact, 3 = NO+NO, 4 = NC+NC, 5 = NO+NC A = 2NO+NC B = NO+2NC C = 2NO+2NC



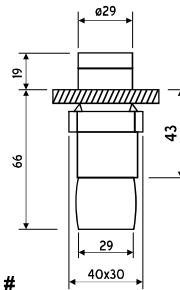
PUSH BUTTON SWITCHES (22.5 mm.)

PB2 - SERIES

ILLUMINATED PUSH BUTTON (LED TYPE)

FLUSH TYPE / PROJECTED TYPE

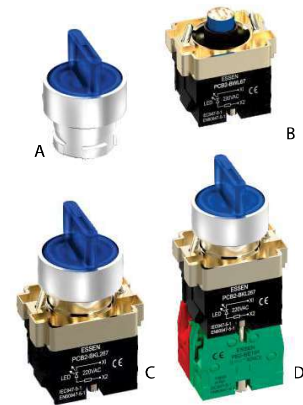
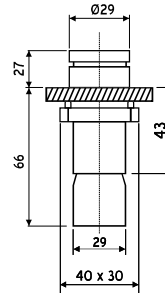
Type	Description	Ordering code	
		FLUSH	PROJECTED
A	Actuator	PB2-BW3()	PB2-BWL3()
B	Body assembly	PCB2-BWL()7 #	PCB2-BWL()7 #
C	Actuator with body assembly	PCB2-BWL3()7 #	PCB2-BWLL3()7 #
D	Actuator with body assembly and contact block	PCB2-BWL3()7* #	PCB2-BWLL3()7* #



ILLUMINATED SELECTOR SWITCH (2 Position)

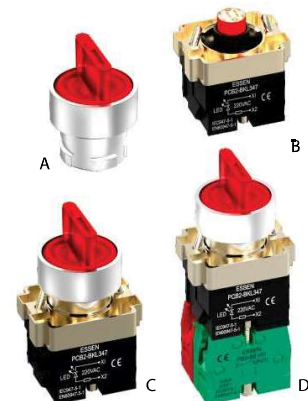
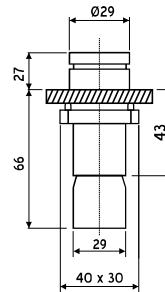
2 POSITION - STAY PUT

Type	Description	Ordering code
A	Actuator	PB2-BK2()
B	Body assembly	PCB2-BWL()7 #
C	Actuator with body assembly	PCB2-BKL2()7 #
D	Actuator with body assembly and contact block	PCB2-BKL2()7* #



3 POSITION - STAY PUT

Type	Description	Ordering code
A	Actuator	PB2-BK3()
B	Body assembly	PCB2-BWL()7 #
C	Actuator with body assembly	PCB2-BKL3()7 #
D	Actuator with body assembly and contact block	PCB2-BKL3()7* #



Note : Please mention operating voltage while ordering illuminated push buttons

Add following suffixes in the ordering code of push button switches for colour & voltage contact blocks.

() 1 = White, 3 = Green, 4 = Red, 5 = Yellow, 6 = Blue

* 1 = NO contact, 2 = NC contact, 3 = NO+NO, 4 = NC+NC, 5 = NO+NC A = 2NO+NC B = NO+2NC C = 2NO+2NC

24, 110, 220 V AC & 24, 110, 220 V DC



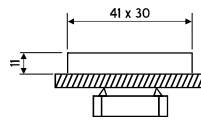
PUSH BUTTON SWITCHES (22.5 mm.)

PB2 - SERIES

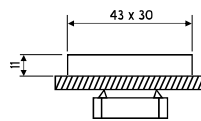
TWIN PUSH BUTTON SWITCHES

(with metal bracket)

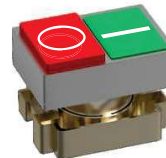
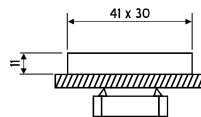
Description	Ordering code
Both Red & Green buttons flush type	PCB2-BA 9124



Description	Ordering code
Both Red & Green buttons with transparent cover	PCB2-BA 9224



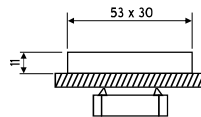
Description	Ordering code
Red projecting type with 'O' mark Green flush type with 'I' mark	PCB2-BA 9134



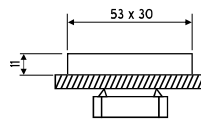
ILLUMINATED TWIN PUSH BUTTON SWITCHES

(without metal bracket)

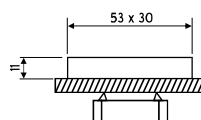
Description	Ordering code
Red & Green both buttons flush type & with amber lens	PB2-BW 81254



Description	Ordering code
Red flush type with 'O' mark Green flush type with 'I' mark with amber lens	PB2-BW 81454



Description	Ordering code
Red projecting type with 'O' mark Green flush type with 'I' mark with amber lens	PB2-BW 83254





PUSH BUTTON SWITCHES (22.5 mm.)

PB2 - SERIES

CONTACT BLOCK WITH SCREW AND CAPTIVE CONNECTION

CONTACT ELEMENT 'NO'



Ordering code

PB2 BE101

CONTACT ELEMENT 'NC'



PB2 BE102

METAL BRACKET



PB2 B

LED MODULE PILOT LIGHTS

Type	Description	Ordering code
A	Pilot light head	PB2-BVO()
B	Body assembly	PCB2-BWL()7 #
C	Pilot light head with body assembly	PCB2-BWVL()7 #

Add following suffixes in the ordering code for colour & voltage.
 () 1 = White, 3 = Green, 4 = Red, 5 = Yellow, 6 = Blue
 # 24, 110, 220 V AC & 24, 110, 220 V DC



A



B

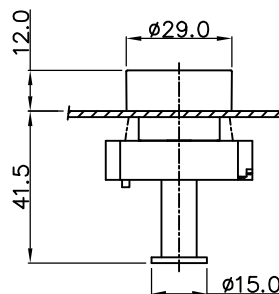


C

RELAY RESET ACTUATOR

Ordering code
PCB2-BA() RR

() 1 = White, 2 = Black, 3 = Green, 4 = Red, 5 = Yellow, 6 = Blue



All dimensions are in mm.
 Due to continuous improvement in products, we reserve the right to alter specifications without prior notice



PUSH BUTTON CONTROL STATION

PB2 - SERIES

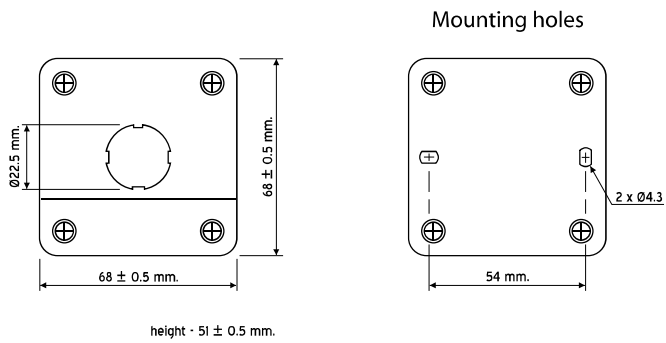
Characteristics ■ Conform to IS : 13947 (part 5/sec.-1) & IEC : 947-5(1)
■ IP65 protection

CE

Plastic enclosure (Yellow top, Black base)

No. of ways Ordering code

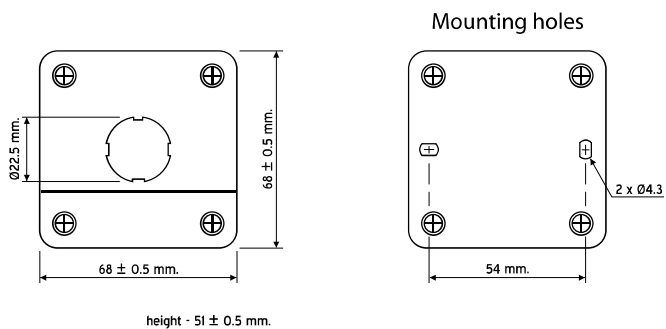
1 **PC-01PY**



Plastic enclosure (Grey top, Black base)

No. of ways Ordering code

1 **PC-01P**



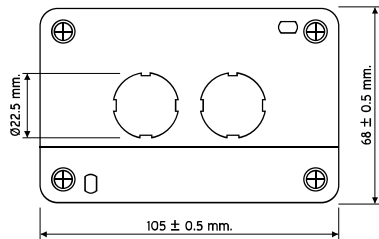


PUSH BUTTON CONTROL STATION

PB2 - SERIES

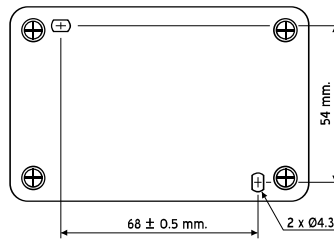
Plastic enclosure (Grey top, Black base)

No. of ways	Ordering code
2	PC-02P



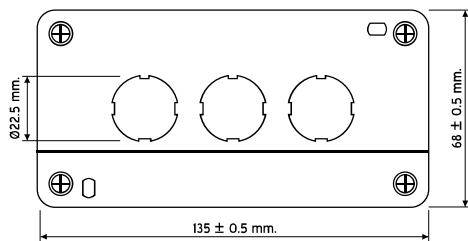
height - 51 ± 0.5 mm.

Mounting holes



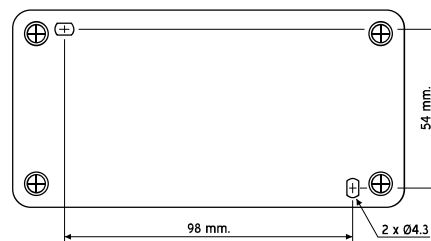
Plastic enclosure (Grey top, Black base)

No. of ways	Ordering code
3	PC-03P



height - 51 ± 0.5 mm.

Mounting holes



All dimensions are in mm.
Due to continuous improvement in products, we reserve the right to alter specifications without prior notice