



M1S 660-11-K-Y

- without mounting flange
- Rubber enclosure
- soldering terminals and spade terminals
- Metal coating

Data

Ordering data

Product type description	M1S 660-11-K-Y
Article number (order number)	101055425
EAN (European Article Number)	4030661005645
eCl@ss number, version 12.0	27-27-06-01
eCl@ss number, version 11.0	27-27-06-01
eCl@ss number, version 9.0	27-27-06-01
ETIM number, version 7.0	EC000030
ETIM number, version 6.0	EC000030

General data

Standards	EN IEC 60947-5-1
Gross weight	75 g

General data - Features

Number of normally closed (NC)	1
Number of normally open (NO)	1

Mechanical data

Mechanical life, minimum	3,000,000 Operations
Actuating speed, minimum	1 mm/min

Mechanical data - Connection technique

Terminal designations	H05VV-F
Wire cross-section	0.75 mm ²

Ambient conditions

Degree of protection	IP65
Ambient temperature	-30 ... +80 °C

Ambient conditions - Insulation values

Rated insulation voltage U_i	250 VAC
Rated impulse withstand voltage U_{imp}	4 kV

Electrical data

Thermal test current	4 A
Utilisation category AC-15	230 VAC
Utilisation category AC-15	1 A
Switching principle	Snap action with self-cleaning contact
Maximum switching frequency	30,000 /h
Material of the contacts, electrical	Gold-plated silver (AgNi 15 + Au 0,3µm)

Ordering code

Product type description:
M(1) 660(2)-11-k-y(3)

(1)

S

rubber collar

1S	telescopic plunger
2S	telescopic plunger
2R	telescopic roller plunger
(2)	
without	without mounting flange
0	with mounting flange (only for S)
(3)	
U	With roller across switch axis (only for 2R)

Pictures

Product picture (catalogue individual photo)



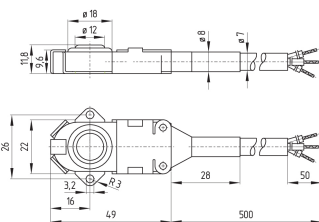
ID: KM660F04

| 229.2 kB | .jpg | 132.292 x 339.725 mm - 375 x 963 px - 72 dpi

| 115.8 kB | .png | 74.083 x 190.147 mm - 210 x 539 px - 72 dpi

| 29.2 kB | .jpg | 47.978 x 123.472 mm - 136 x 350 px - 72 dpi

Dimensional drawing basic component



ID: Km660g02

| 123.5 kB | .jpg | 352.778 x 236.714 mm - 1000 x 671 px - 72 dpi

Schmersal Ltd., Sparrowhawk Close, WR14 1GL Malvern

The details and data referred to have been carefully checked. Images may diverge from original. Further technical data can be found in the manual. Technical amendments and errors possible.

Generated on: 25/04/2024, 14:33